

Recognizing Prior Learning

You live. You learn. It all counts.

Recognizing Prior Learning Network Newsletter

Newsletter Contents

RPL Network Launched	Page 1
Interview with Paul Zakos on Adult Learner Friendly Institutions	Page 2
Saskatchewan Success Stories – U of S Learner Embarks on PLAR Process	Page 2
Advanced Certificate: RPL Practitioner	Page 3
Highlights of RPL Coordinating Group Activity	Page 4
Proposed Networking Event and Questionnaire	Page 4
Interesting Recently Published Reports	Page 4

RPL Network Launched



Ninety one people have expressed an interest in joining the Saskatchewan RPL Network. The purpose of the Network is for participants to share resources, tools, best practices and offer professional development activities related to learning recognition. If you know someone who would like to join the Network, please have them email: rlearnin@gov.sk.ca

In an effort to **GET NETWORKING**, a contact list has been prepared and has been circulated with this newsletter. A **Working Group** is being established to meet the needs of the Network. If you are interested in helping out, have comments or contributions for the Network Newsletter, please contact Natalie Shorten at: natalie.shorten@gov.sk.ca.

Adult Learner Friendly Institutions (ALFI) An Interview with Paul Zakos

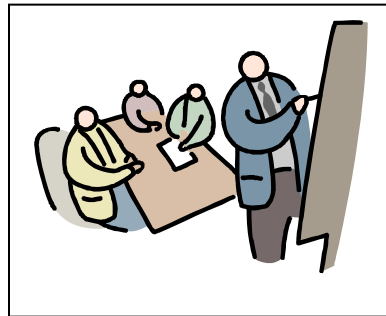
In August 2008, Paul Zakos, Project Manager for the Adult Learner Friendly Institutions Canada ALFI (Can) Project, 2007 was interviewed about his project. The purpose of the ALFI (Can) project was to develop a comprehensive set of principles for use by institutions and community-based organizations to assess their services to adult learners.

For the full interview including the link to the full report..... [click here](#)

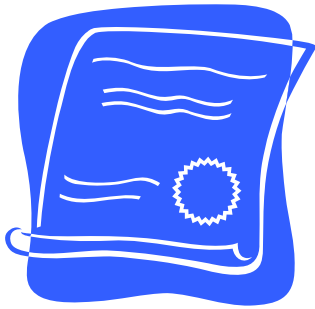
Saskatchewan Success Stories RPL Making a Difference

After many years in middle management positions with regional, provincial and federal governments, Patti Tait talks about the experience of having her learning recognized at the University of Saskatchewan. Patti is working toward her degree in sociology. In addition to receiving transfer credits from two Ontario universities, Patti was awarded a total of 30 credit units toward her degree, based on providing evidence that her work experience resulted in meeting the learning outcomes required for courses in the Bachelor of Sociology Degree.

The full interview is available: [here](#)



Advanced Certificate: Recognition of Prior Learning Practitioner



The Recognition of Prior Learning Practitioner program provides practical training in all prior learning recognition disciplines. Practitioners working in education, career counselling, human resource management and employee recruitment fields can benefit from this program which prepares participants in recognition of prior learning practices such as prior learning assessment and recognition (PLAR), credit transfer, and qualification recognition. The program places a major emphasis on prior learning assessment and recognition.

For complete program information and admission requirements, check the SIAST calendar or visit: <http://www.siastr.sk.ca/siastr/educationtraining/advancedcertificate/5883/8665/5854/index.shtml>
For information on future scheduling of courses contact Gary Smith at smithg@siastr.sk.ca or (306) 659-4034. For applicants with related competencies, prior learning assessment and recognition (PLAR) is available.

Highlights of RCG Activity

The Recognizing Prior Learning Coordinating Group (the “RCG”) was tasked with the responsibility to engage a wide range of Saskatchewan stakeholders in work to advance learning recognition in Saskatchewan. The Annual Report of the RCG describes the mandate of its working groups and RCG activity. The 2007 report is available at: www.aeel.gov.sk.ca/rpl . One current project of the RCG is to identify priorities for RPL in Saskatchewan. This need assessment is accountable to the Communications and Centres Working Groups and a short summary of the project is available [here](#).

Proposed Networking Event November 2008

An RPL networking event is being planned for November 2008. The Expertise Working Group would like to invite you to provide input to the event and to show your interest in attending. Please complete the following questionnaire which will help the RPL Expertise Working Group with event planning and make sure the event works for you and meets the needs of your organization/group. [Fall 2008 Networking Questionnaire](#)

Worth a Look- Recently Published Reports

State of Learning in Canada: Toward a Learning Future

July 2008, Canadian Council on Learning

<http://www.ccl-cca.ca/CCL/Reports/StateofLearning/>

Gregory Charles: Enjoying the benefits of lifelong learning

July 2008, Canadian Council on Learning

<http://www.ccl-cca.ca/CCL/Newsroom/Profiles/PILGCharles.htm>

Connecting Supply and Demand in Canada's Youth Labour Market

Richard Brisbois, Larry Orton, Ron Saunders, April 2008, Canadian Policy Research Networks

http://www.cprn.org/documents/49679_EN.pdf

Employer Investment in Workplace Learning

Ron Saunders, May 2008, Canadian Policy Research Networks

http://www.cprn.org/documents/49985_EN.pdf

Factors Affecting the use of Student Financial Assistance by First Nations Youth

R.A. Malatest & Associates Ltd., and Dr. Blair Stonechild (First Nations University of Canada), July 2008, Millennium Scholarship Foundation.

http://www.millenniumscholarships.ca/images/Publications/MRS_AB_11JLY2008_EN.pdf

Pathways for Youth to the Labour Market: A Synthesis Report

Ron Saunders, September 2008, Canadian Policy Research Networks

http://www.cprn.org/documents/50456_EN.pdf